

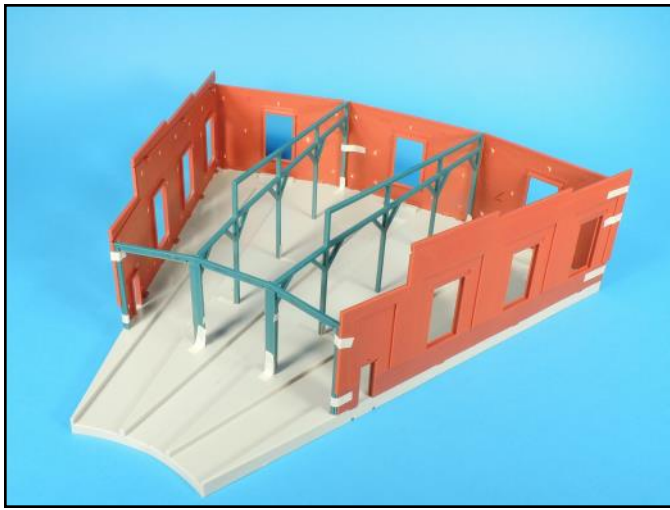
MIKE ASHEY PUBLISHING
COMPREHENSIVE SERIES SCALE MODEL RAILROAD MANUAL
NUMBER 1
BUILDING AND WEATHERING THE ATLAS HO SCALE
3 STALL ROUNDHOUSE

This kit has a lot of parts for an HO scale structure, including separate foundation panels for the exterior sides. The model assembly is straight forward with some seam work required at the connection points of the wall panels and the separate foundation panels. The roof panels need some tweaking to get them to fit and so do the railings on the left and right sides of the structure. The roof vent halves are also slightly mismatched and need some attention.

Testors enamel paints were used and all the paint colors were applied with a Badger 200 airbrush. Silver paint, applied with a brush was used to help identify seam flaws and highlight areas where residual super glue remained. Evergreen half round rod was used to hide some seams. Elmers glue was used to fill gaps between wall sections and to attach the windows, doors, roof panels and other small parts.

I decided to paint the model representing a brick and mortar surface that had been painted over, but heavily weathered. Lighter colors of flat red and gray mixed with a few drops of flat white were dusted onto the surfaces of the base paint color to represent the fading and bleaching effects of the sun. Pencil pastel dust and chalks are a great way to represent soot, grime and rust. To make pastel dust, run a pastel pencil across a piece of sandpaper to create the dust and then apply it with flat brushes of various sizes. To seal the pastel dust, I used Testors clear dullcoat from a spray can. Do not use oil pastels because they do not create dust that can be applied with a flat brush.

The 3 Stall Roundhouse has a fairly large footprint when finished and when used on a model railroad layout the track extending into the roundhouse will need to be elevated to match the elevation of the kits foundation.



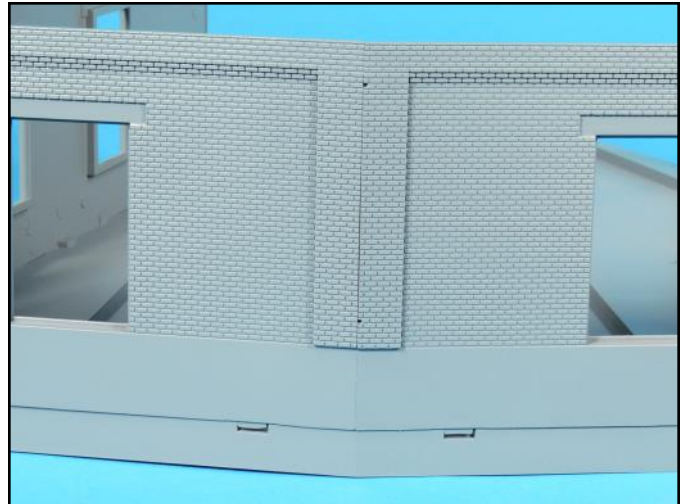
Always test fit the main components of a kit to identify any fit issues. Make notes on the kit's instructions and ideas on how to fix them.



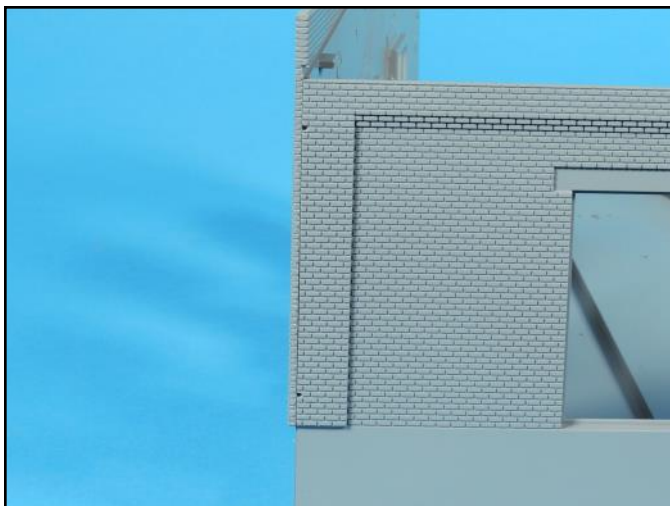
After gluing the two foundations sections together, I applied super glue along the seam line. I then sanded the super glue smooth by wet sanding with various grades of sanding sticks. Silver paint was used to check the seam.



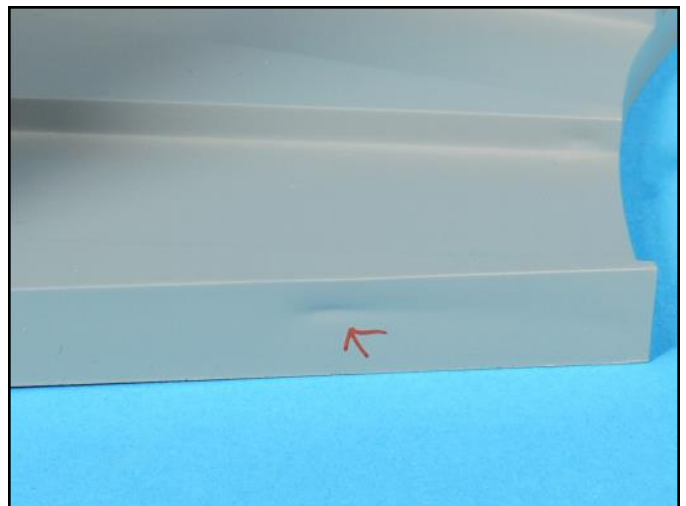
The main wall sections were glued to the foundation and then the entire assembly was primed. The seams at the connection points of the wall will need to be filled.



The center wall sections also had seams.



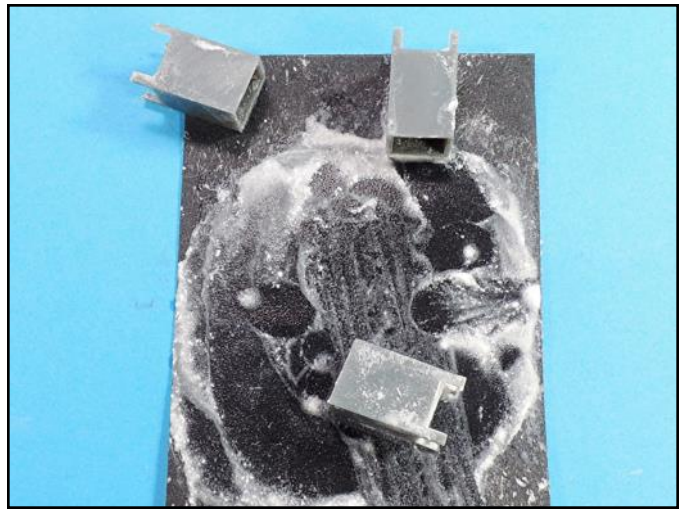
The rear left side had a slight bow, which created a void at the seam.



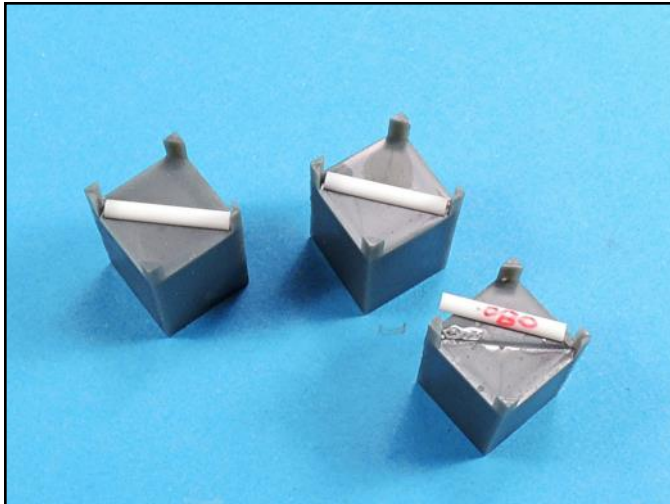
The primer coat highlighted this dimple, which I did not see when I was checking the part. I sanded it out using sanding sticks of various grades. The surface was then polished smooth with 0000 steel wool and re-primed.



After I primed and started painting the roundhouse doors, I noticed the mold punch out indentations on the parts surface. I sanded the indentations smooth and then re-primed and repainted the doors Testors flat green.



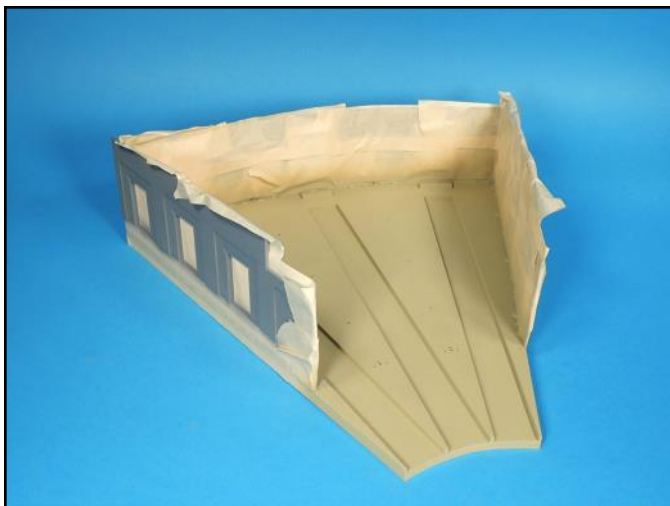
The roof vents were left and right half section assemblies that did not fit well. After assembling the vents and adding extra super glue to the seams, I ran the sides across wet sandpaper to smooth out the seams and remove excess glue.



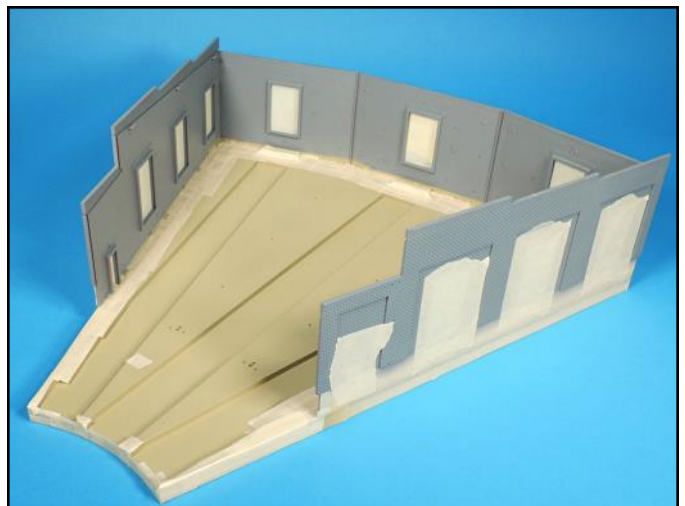
The tops of the vents also had seams that were impossible to fix so I hid them with .080 inch Evergreen half round strips.



The sides of the foundation were separate sections and I forgot to mask these areas when I primed the assembly. I carefully sanded off the primer on the gluing surfaces for the foundation sections.



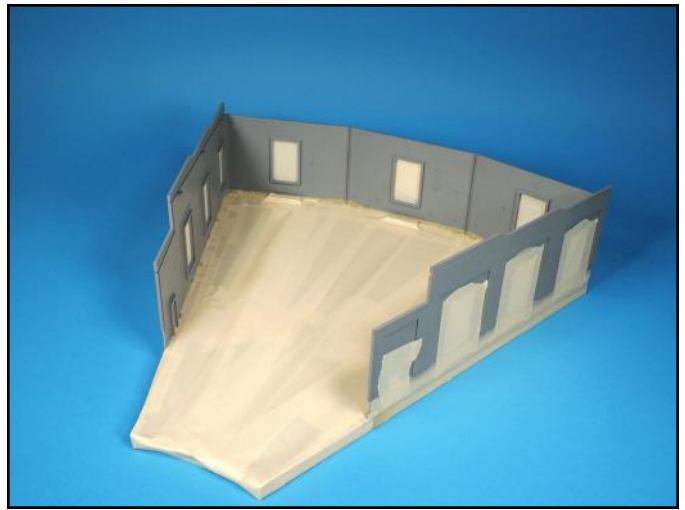
After applying masking tape to the interior walls, the floor received several airbrushed light coats of Testors desert sand color, which is very close to Floquil's concrete color.



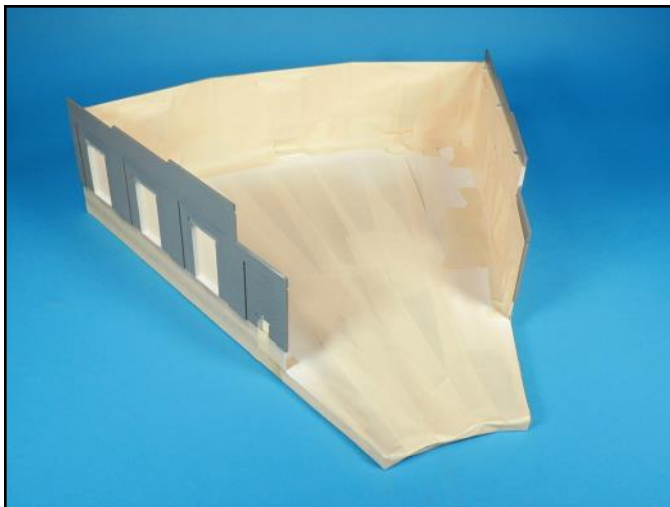
Next, the interior flooring was masked so that the walls could be airbrushed a light sea gray color. Small sections of masking tape were added along the edge of the floor where it meets the wall.



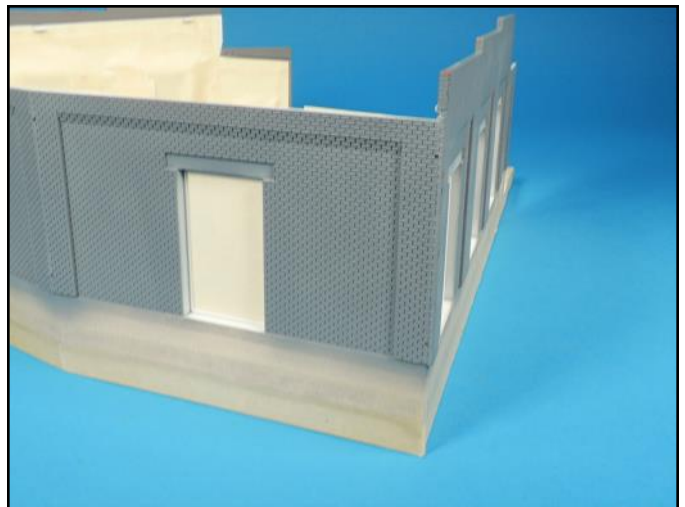
Working with small sections of masking tape allowed for better control of the positioning of the tape and helped ensure sharp demarcation lines between colors.



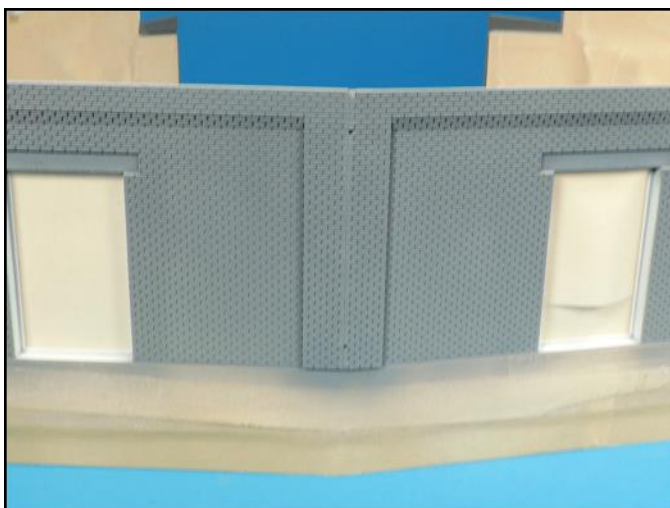
Once the edges were finished, larger sections of masking tape were applied to the open areas of the floor.



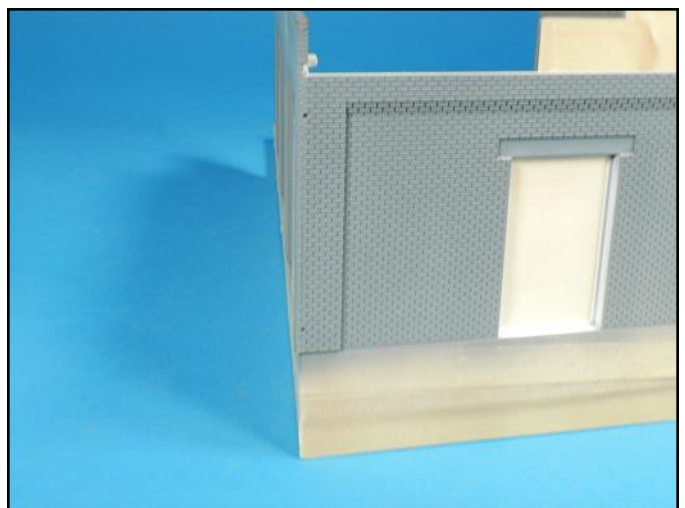
The interior was airbrushed with Testors flat sea gray, which is a very light gray color. I then masked the walls.



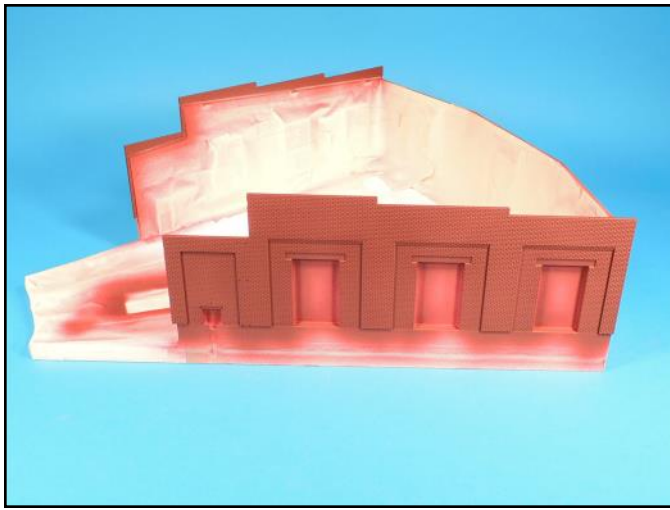
The application of several layers of white glue to the seam and a final coat of primer filled the voids without damaging any of the brick detail.



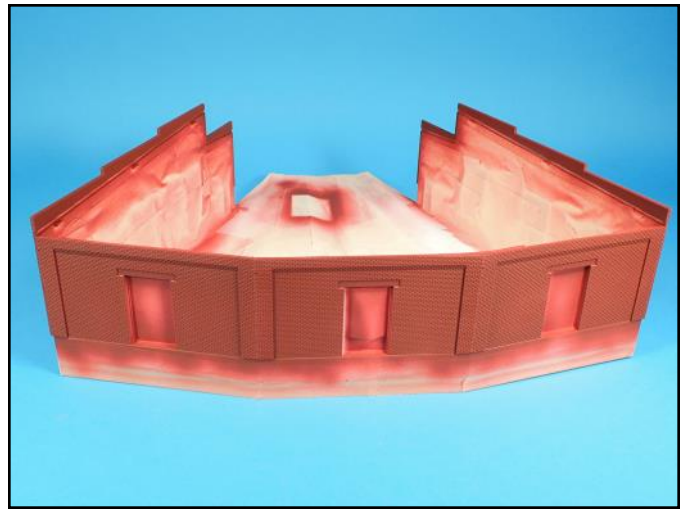
The seam is now gone. Note that there is not residual white glue on the surface of the brick.



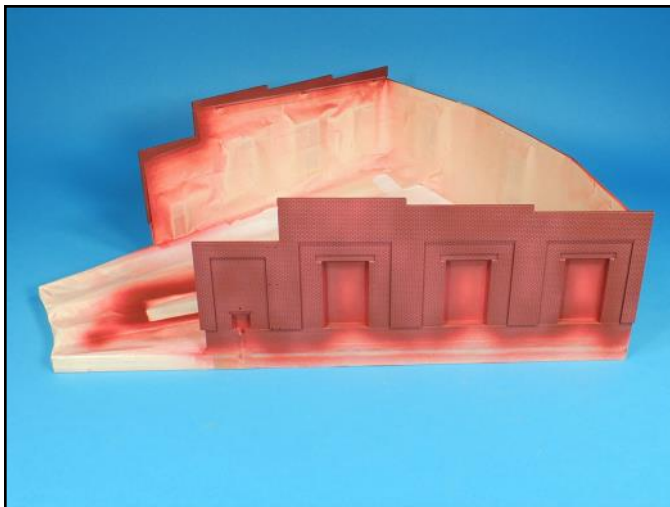
This outside corner had a void along the seam and the application of tiny drops of white glue contoured with the tip of a damp Q-Tip fixed it. Re-prime these areas to be sure no additional applications of white glue are needed.



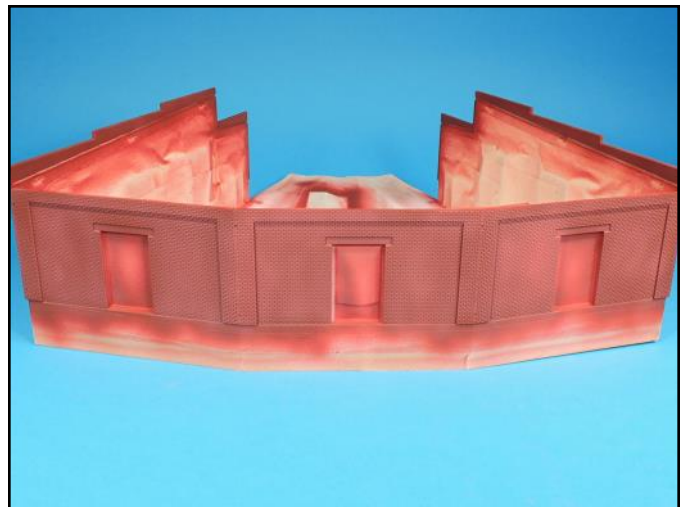
For the brick and mortar color I used Testors flat red with a few drops of flat black mixed in to darken the flat red color. Several light coats were airbrushed onto the surface.



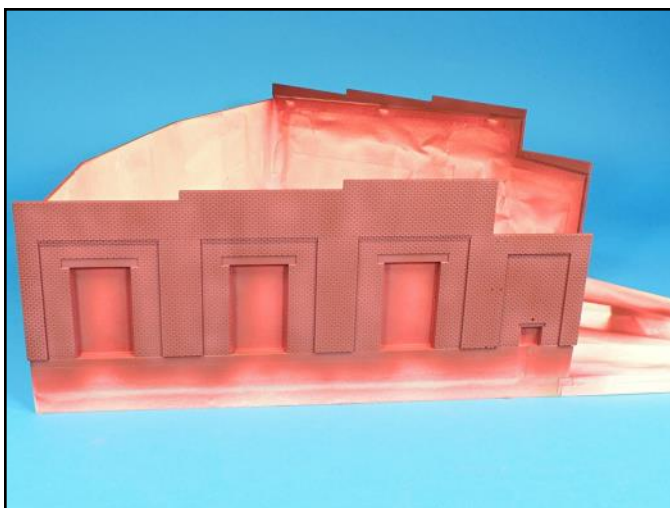
The backside of this kit has a large surface area and airbrushing it took some time to cover the entire surface including the small steps between the extended brick work.



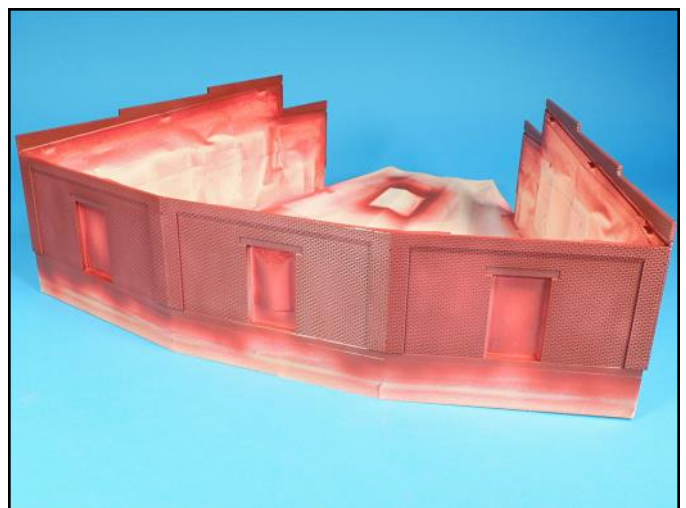
To weather the brick and mortar color, I added some flat white to the flat red and airbrushed a dusting of this lighter color over the surface of the brick.



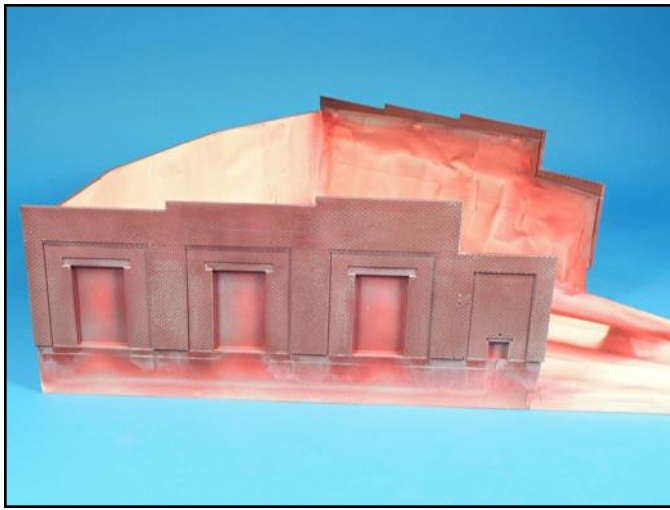
I airbrushed the lighter brick color from the top to the bottom of the brick work so that the weathering effect also appeared streaky due to exposure to the weathering effects of rain.



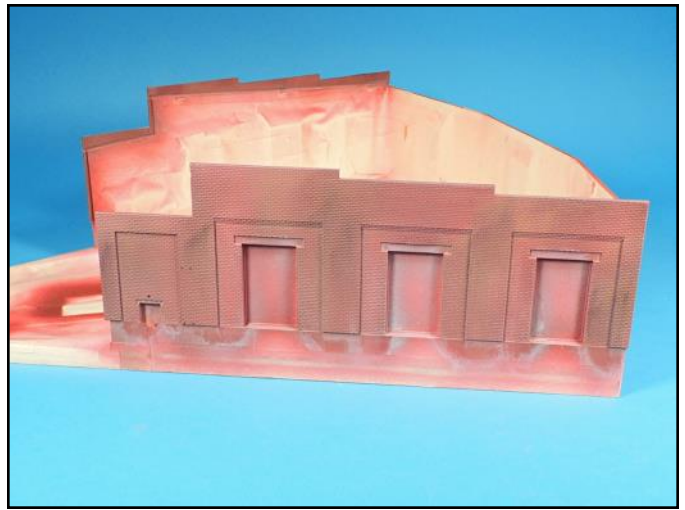
The surface brick and mortar color is faded and streaked and now it is time to bleach it. The surfaces were covered with a clear gloss finish using a spray can of Minwax polyurethane.



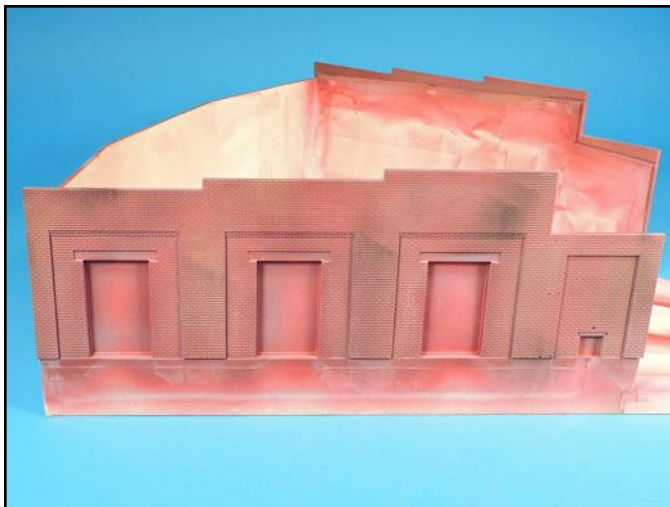
I painted each of the wall panels with a water base gray paint color, applied with a flat brush. I then removed the paint with a damp Q-Tip. The gray paint left a residue color on the surface, which further bleached the brick color.



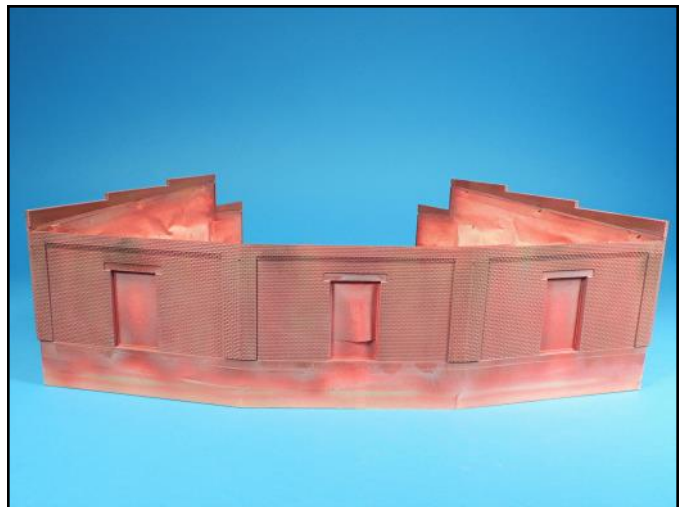
The heavily weathered and bleached appearance of the brick surface was a bit more than I wanted so I airbrushed another coat of the lightened flat red to hide some of the bleaching.



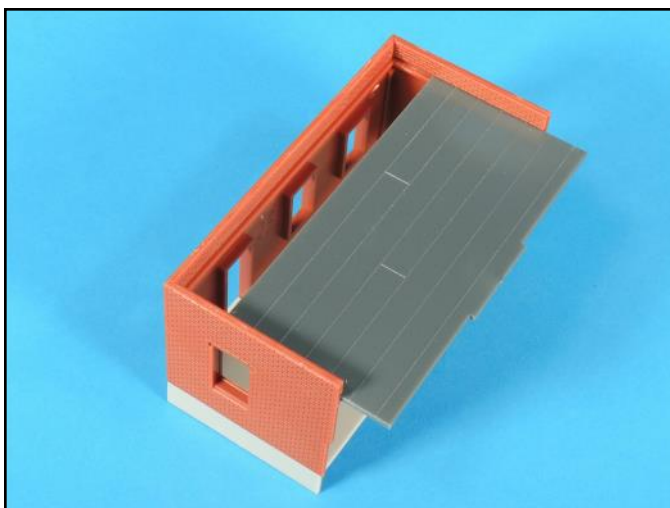
The brick surface was then streaked with pastel pencil dust to add soot and grim.



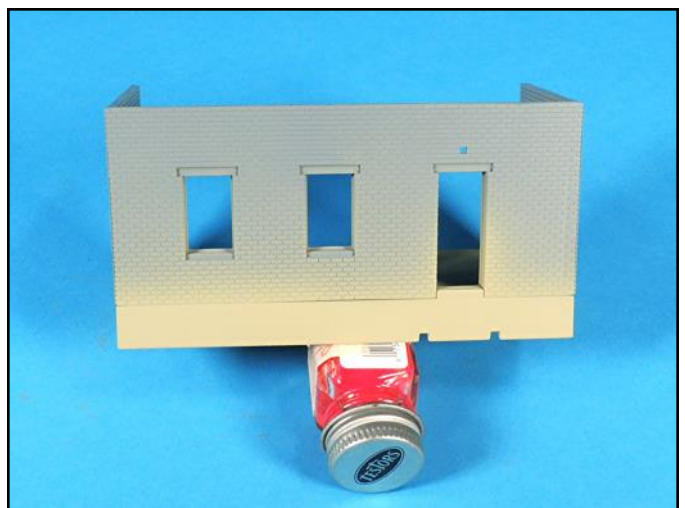
The angled pastel dust on the upper right side had to be corrected so that the streaking was downward from top to the bottom.



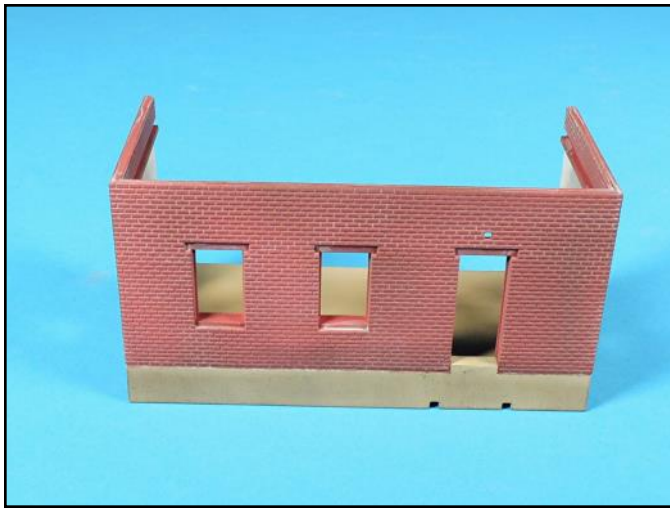
The back side weathering looks good. Once the masking tape has been removed and the remaining exterior parts added the weathering effects of the added paint colors and pastel dust will enhance the appearance of this structure.



I assembled the office building and left the roof as a separate part so I could airbrush the interior.



The assembly was primed and then Testors desert sand color was airbrushed to the foundation and to the interior floor.



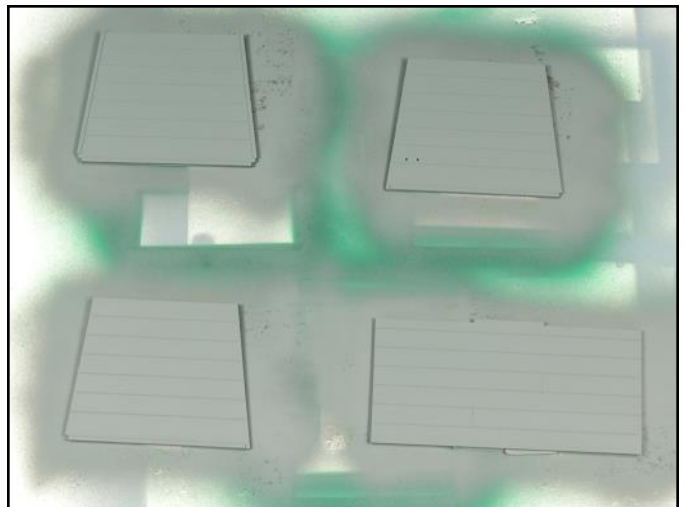
The completed and painted office building received the same lighter flat red colors and then pencil pastel dustings of black and gray for enhanced weathering.



The roof panels were painted with Testors euro gray color.



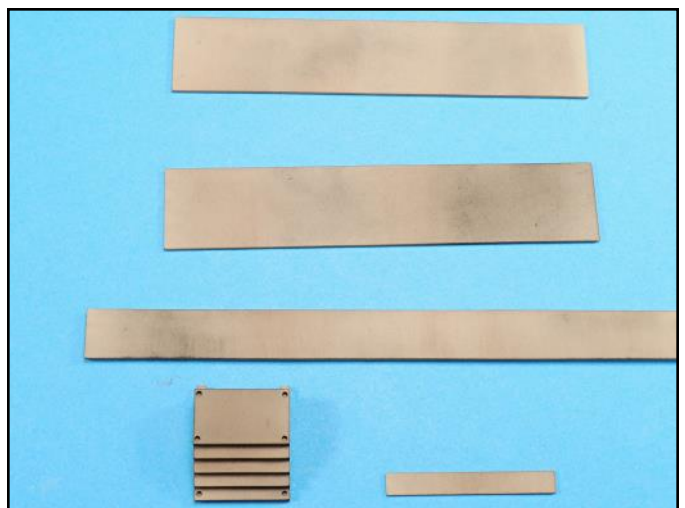
The roof surfaces were streaked with a lighter shade of the euro gray and then a rust colored pencil pastel dust was applied to the surface to represent subtle rusting and rust streaks.



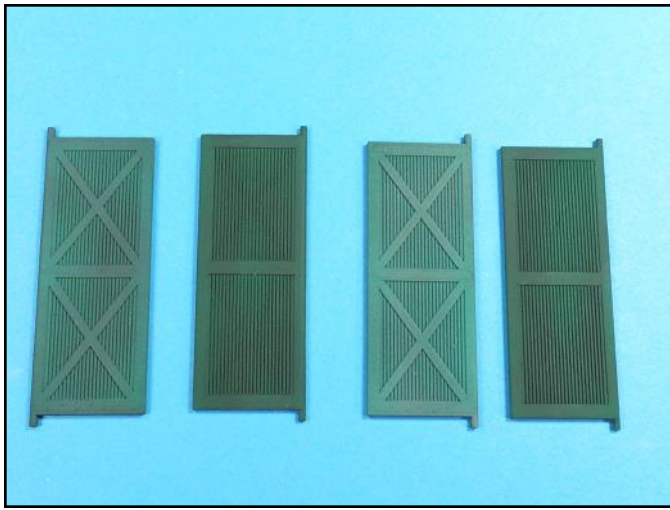
The smaller roof panels were also airbrushed Testors euro gray.



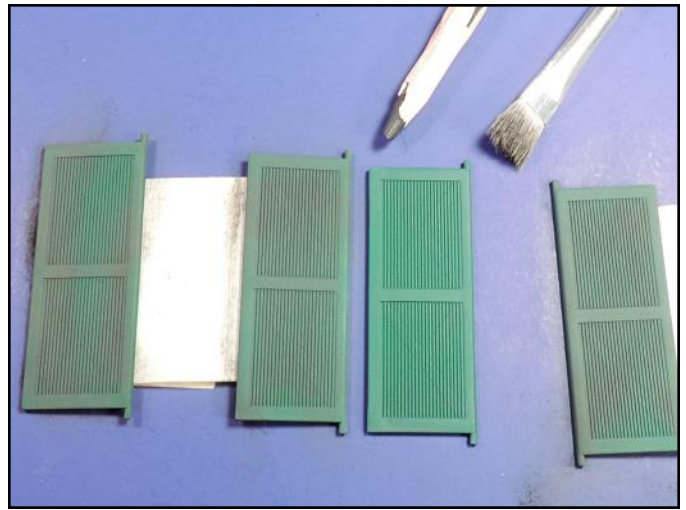
These smaller roof panels were also streaked from left to right with a lighter euro color along the roof ridge lines. The surfaces were then streaked with rust colored and black pastel pencil dust.



The steps and the foundation panels were painted Testors desert sand and then streaked with black and dark gray pastel pencil dust. All surfaces that received the pastel dust were sealed with a coat of Testors clear dullcoat.



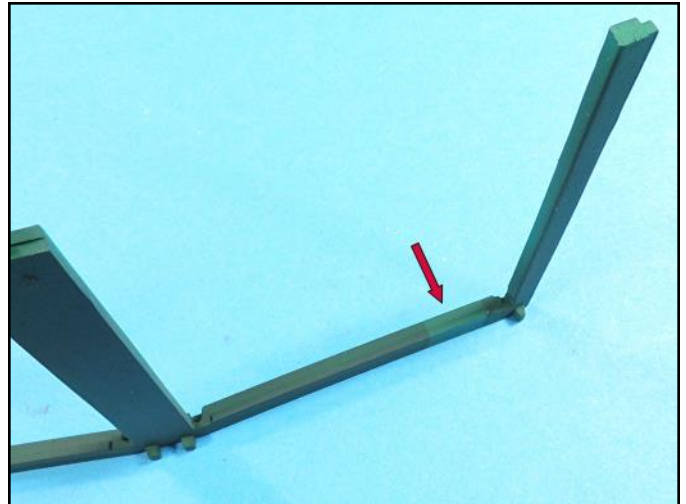
The doors were painted with Testors flat green on both sides. The exterior door sides received a coat of lightened flat green to represent paint faded by exposure to the sun. The flat green had some flat white added to it.



The doors were then given a dusting of black and gray pastel dust and then sealed with Testors clear dullcoat.



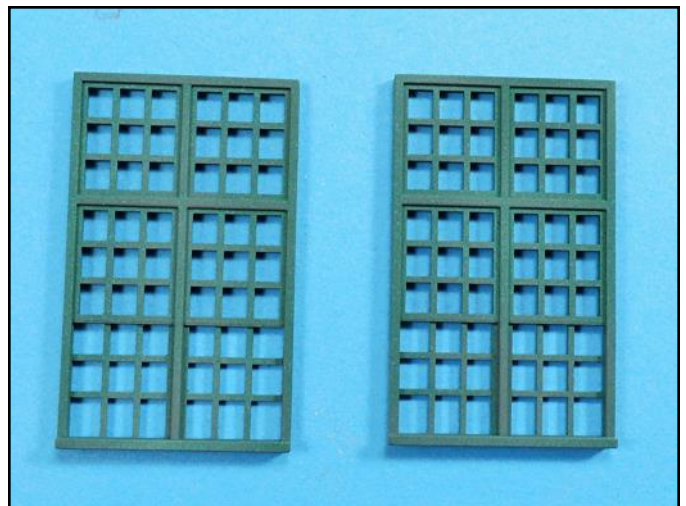
The doors now have a worn and bleached paint colored appearance with a dirt and sooty covering.



The interior framing was painted flat green and then dusted with black pencil dust. Note the difference in the surface color where the tape was located that held the part in place while the pastel dust was applied.



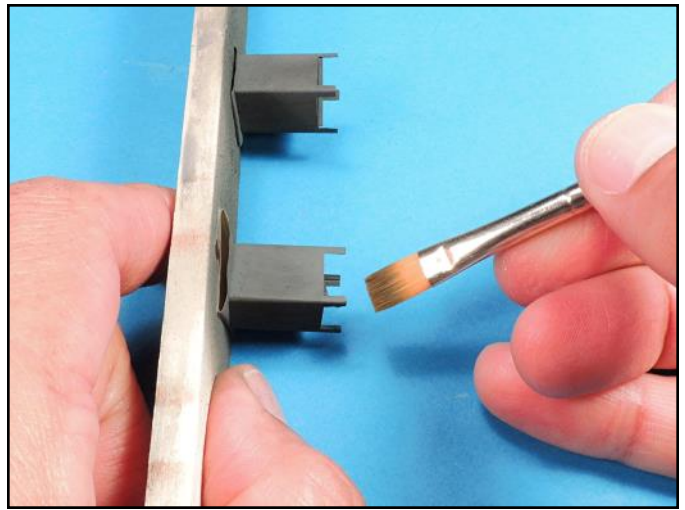
All sides of each frame received dustings of black pencil dust and then the parts were given a coat of Testors clear dullcoat.



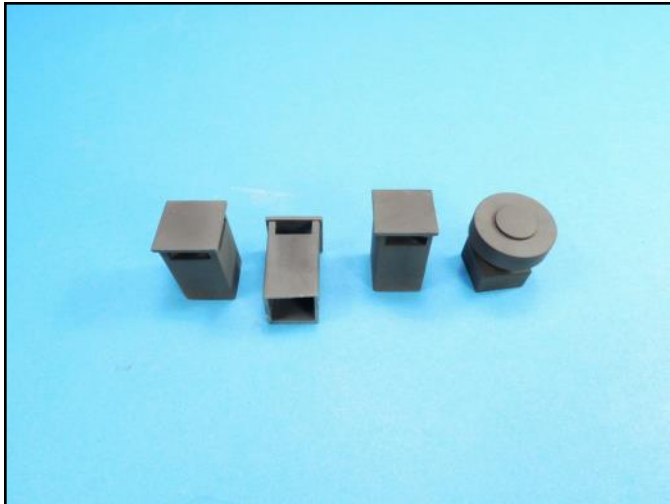
The window frames were also painted flat green. Then a lighter flat green color was applied onto the surface followed by pastel dust.



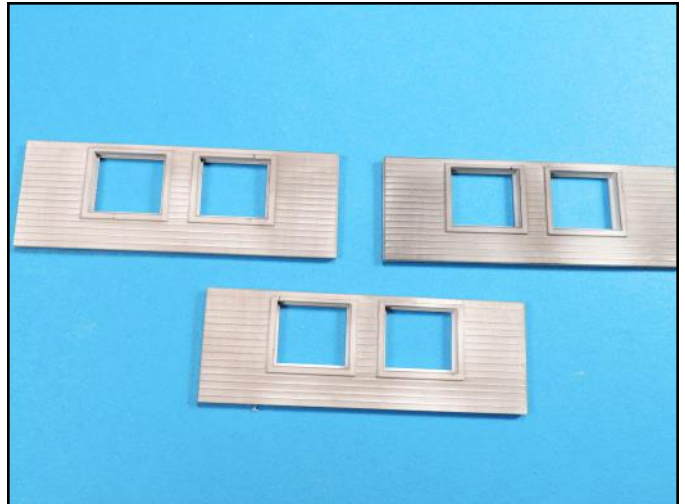
The doors also received the same layered weathering applications as the window frames.



The roof exhaust boxes received lighter dustings of euro gray and then the surfaces were streaked with brown and black pastel dust to represent rust and soot.



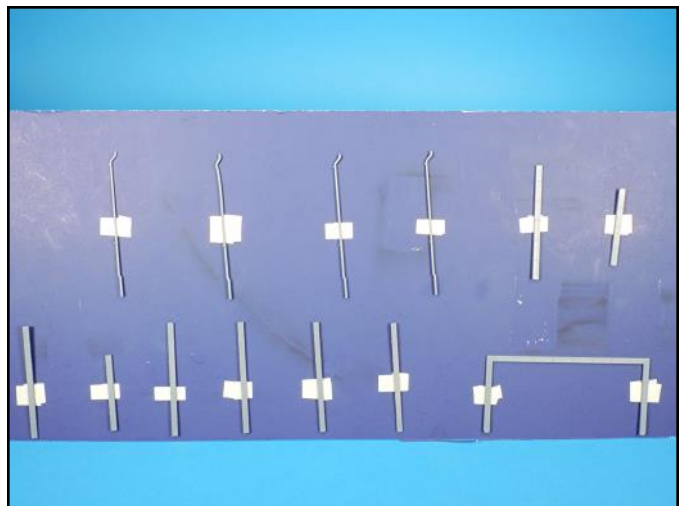
The completed roof vents are now ready for final assembly.



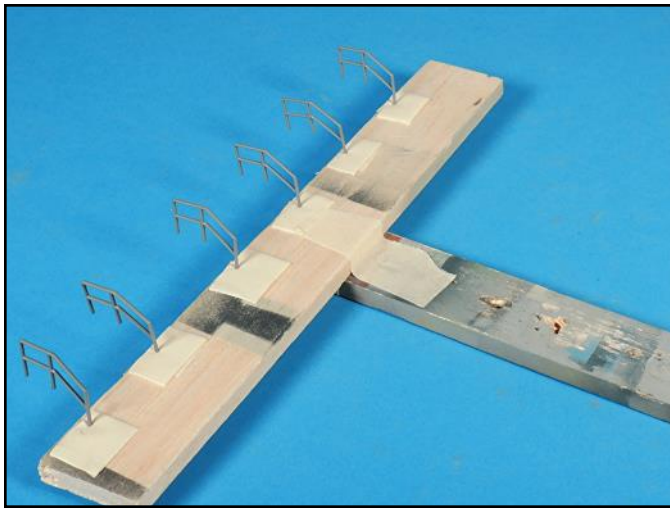
The upper walls on the front of the roundhouse were painted flat white with heavy black and gray streaking of pastel dust.



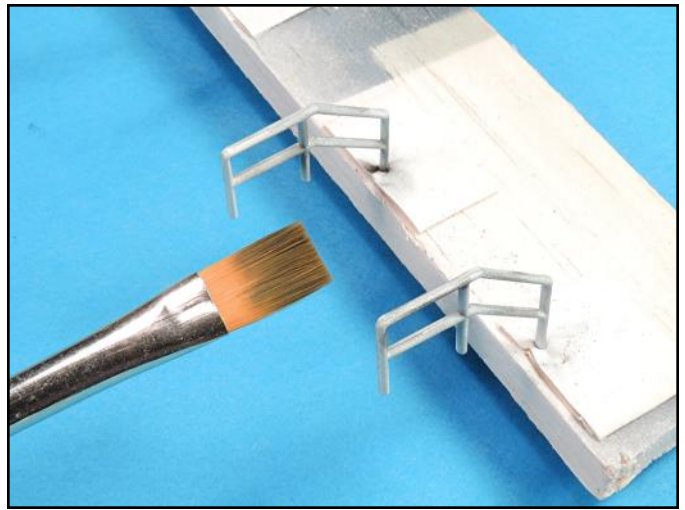
With all the masking tape removed, the interior areas of the structure received dustings of black and gray pastels. I think the floor and walls would have looked better if I had airbrushed light coats of flat black first.



The downspouts and the brick top caps are primed and ready for a coat of Testors brass color.



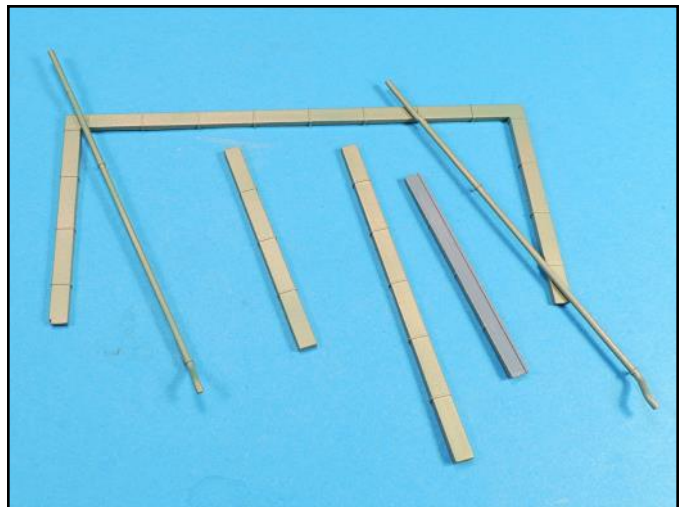
The step handrails were primed and then airbrushed with Testors flat white.



The handrails were then dusted with black pastel dust to give them a grimy appearance.



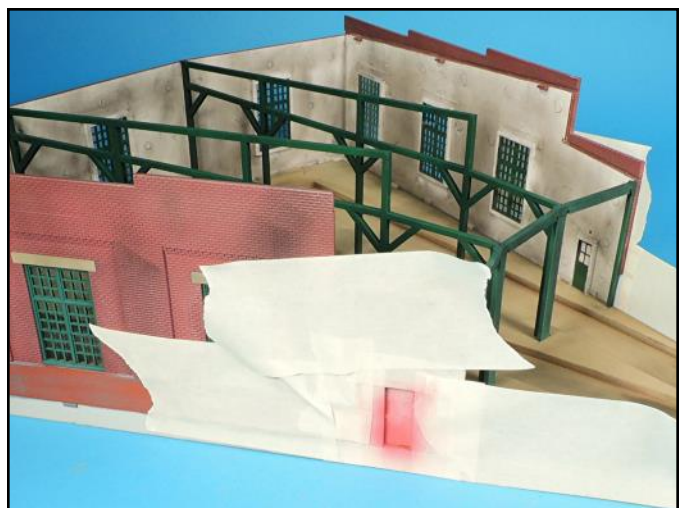
The wall caps and the downspouts are ready for a dusting of green to represent the aged effects that sun and exposure to the elements have on brass sheeting.



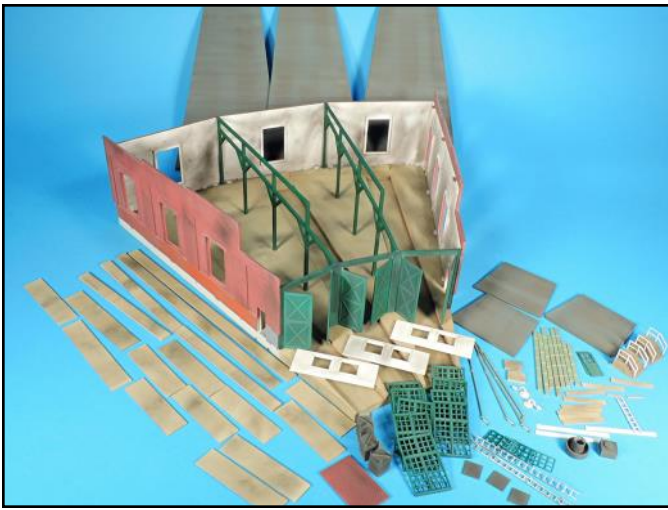
The dusting of green paint was very subtle on the surfaces.



As the assembly of the kit proceeded areas that needed touch up were masked off and painted.



I forgot to airbrush the inside of the door frames so these areas had to be masked, painted and weathered.



This kit had a lot of parts due to the separate exterior foundation panels. All the parts were painted, weathered and sealed, and now it is time to complete the assembly.



The doors and the windows were installed and glued in place with Elmers white glue.



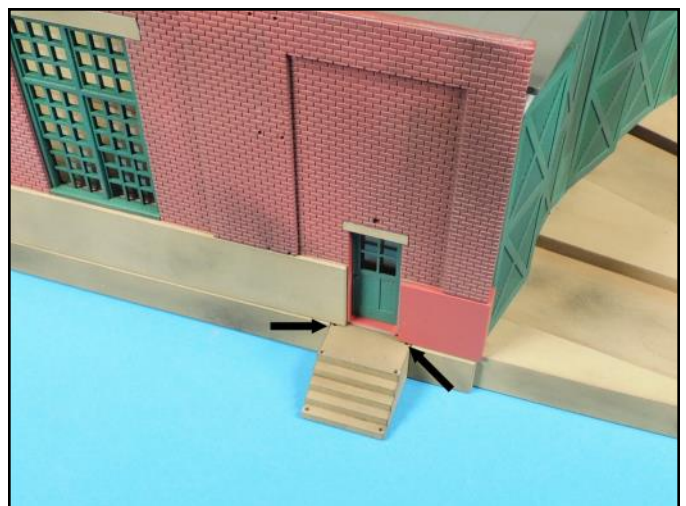
The upper walls and the roof sections were installed and now the assembly is starting to look like a roundhouse.



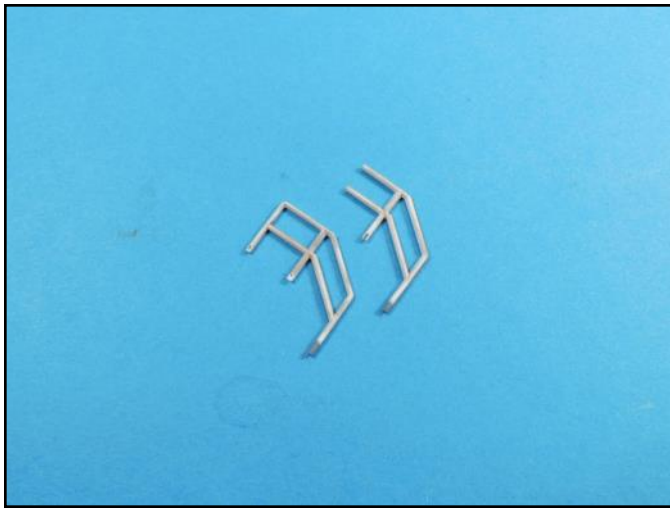
The separate foundation panels for the backside have been installed. I should have waited until the panels were installed before applying the pastel dust.



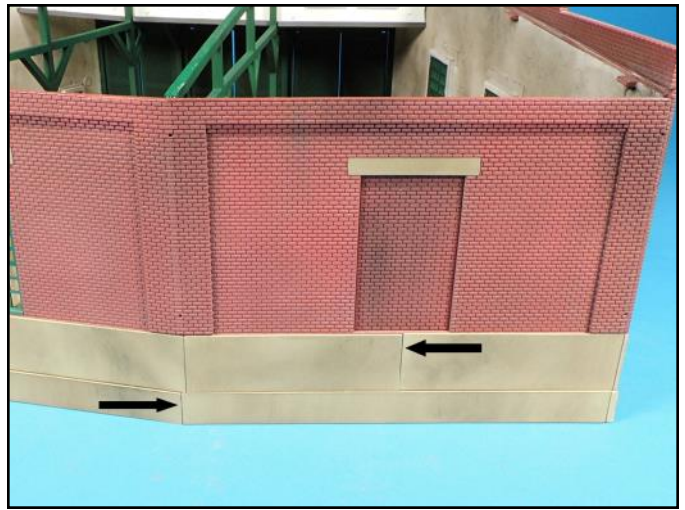
The foundation side panels fit tightly together. The steps were then glued into place.



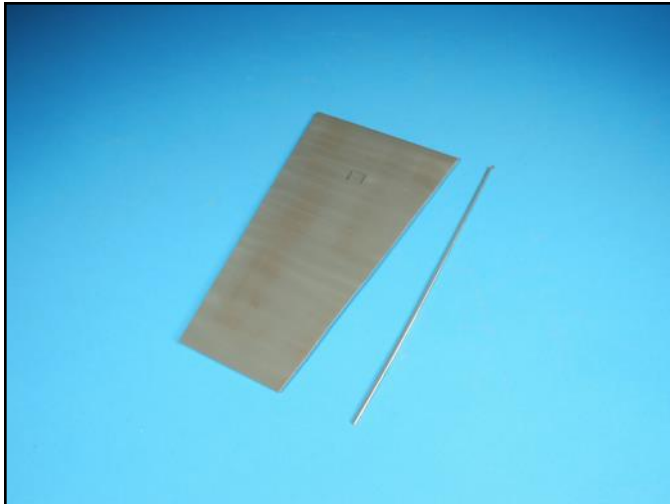
The locating hole at the top of the stairs were set too far in and would not allow the railings to sit correctly.



To fix the upper step locating hole problem I shaved off some of the end with a single edge razer and form fitted the railings in place, removing a little at a time until the rails fit correctly.



There were tiny gaps between the foundation panels that were filled with white glue. After the glue dried they were painted the desert sand color with a detail brush, weathered and sealed.



The center top roof panel was too wide so I had to cut off a sliver to get it to fit correctly between the two end roof panels.



The stairs of the office fit well and no modification to the railings were necessary. Note how clean the assembly looks. There are no seams or voids, no glue marks or paint drips.



The roof and vents were added along with the down spouts and roof caps. Note the disparity between the upper and lower foundation panel weathering. I should have applied the pastel dust after the panels were attached to the walls.



The front of the structure looks great and the simple weathering techniques of lightened paint colors and pastel dust greatly enhances the appearance of the completed model.

